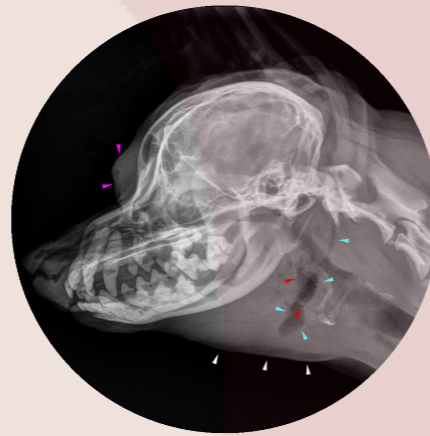


## Reporting accuracy guarantee

Partnering with VetCT means together we see more. Our detailed, annotated, reports written by board-certified specialists provide you with the diagnostic confidence you need to make the best next step in your patient treatment plan. Our reports are 99% accurate and come with our very own clinical warranty.\*



## Reporting turnaround times

Select the service that best suits the need of each patient. Turnaround times are an approximate guide, please see the live turnaround times on the platform for up-to-date information. Business Days are Monday to Friday.

	Regular hours				Out of hours	
	Standard	Enhanced	Priority	Urgent	Priority	Urgent
X-ray	2-4 Business days	1-2 Business days	< 4 hrs	< 1 hr	< 4 hrs	< 1 hr
CT	2-4 Business days	2 Business days	< 24 hrs	< 4 hrs	< 24 hrs	< 4-6 hrs
MRI	2 Business days	< 24 hrs	< 12 hrs	< 4 hrs	< 12 hrs	< 4-6 hrs



Advice & support on XR, CT & MRI Protocols. Get in touch today!

## Trusted, high-quality, annotated reports

The following are examples of when different services may be considered, however veterinarians are advised to use their own clinical judgment when selecting a service.



### Standard

Designed for non-urgent cases or reviews. You will receive the report before the next appointment.

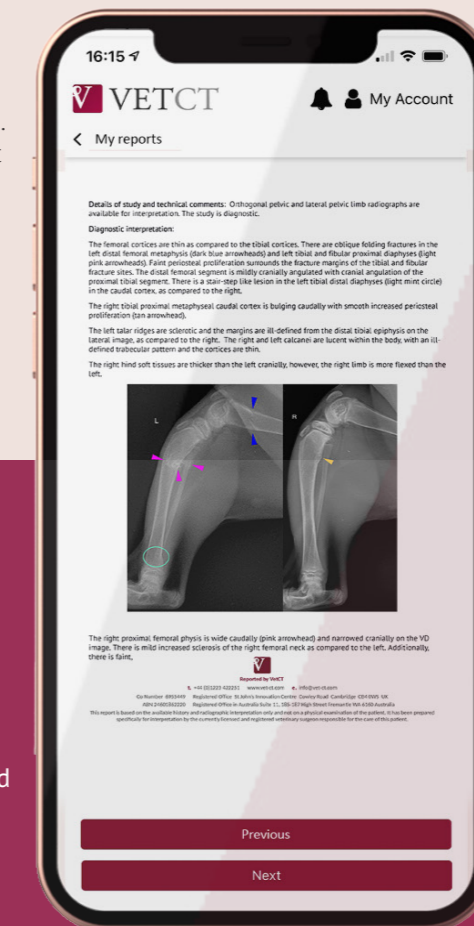
- Chronic gastrointestinal disease
- Chronic lameness
- Juvenile orthopedic screening
- Working dog screening
- Wellness evaluation



### Enhanced

Aimed at cases which need a slightly faster response, for example:

- Chronic dysuria/stranguria
- Metastasis screen
- Recent onset lameness
- Metabolic disease assessment (i.e Cushing's, diabetes, etc.)



## Out of hours

- **Priority:** aimed at hospitalised, sick patients. Select this service type when you need expedited answers between 7pm and 7am Monday to Friday and during the weekend from 7pm Friday to 7am Monday.
- **Urgent:** get rapid answers for extremely sick hospitalised patients needing a time critical report between 7pm and 7am Monday to Friday and during the weekend from 7pm Friday to 7am Monday.



### Priority

Aimed at hospitalized, sick patients. Select this service type when you need expedited answers.

- Recent onset vomiting and/or diarrhea
- Recent onset of coughing
- Stable trauma
- Metastasis screen
- Recent onset lameness
- Fracture evaluation



### Urgent

Get rapid answers for extremely sick, hospitalized patients where time is critical.

- Acute respiratory distress
- Heart Failure
- Unstable trauma
- Highly probable GI obstruction
- Urinary obstruction
- GDV

“

VetCT has been absolutely wonderful to work with. Your radiologists have really taken the time and have allowed staff to learn. The team have been amazing to work with. We could not be doing as good as we are with out your support.”

**Lindsay Johnson, Operations Manager**  
Perrysburg Animal Hospital, Ohio, USA

99%  
of VetCT reports  
are delivered on  
time!



For more information contact your dedicated Account Manager at [sales@vet-ct.com](mailto:sales@vet-ct.com)