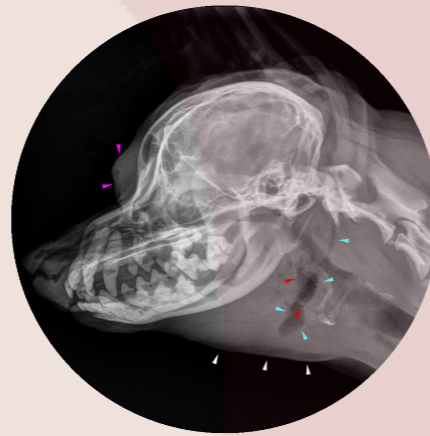


Reporting accuracy guarantee

Partnering with VetCT means together we see more. Our detailed, annotated reports written by board-certified specialists provide you with the diagnostic confidence you need to make the best next step in your patient treatment plan. With over 99% reporting accuracy and our unique clinical warranty you can rely on our reports.*



Reporting turnaround times

Select the service that best suits the need of each patient. Please note this table is an approximate guide. Current turnaround times are updated live on the VetCT platform. Business Days are Monday to Friday.

	Regular hours				Out of hours	
	Standard	Enhanced	Priority	Urgent	Priority	Urgent
X-ray	2-4 Business days	1-2 Business days	< 4 hrs	< 1 hr	< 4 hrs	< 1 hr
CT	2-4 Business days	2 Business days	< 24 hrs	< 4 hrs	< 24 hrs	< 4-6 hrs
MRI	2 Business days	< 24 hrs	< 12 hrs	< 4 hrs	< 12 hrs	< 4-6 hrs



Advice & support on X-ray, CT & MRI Protocols. Get in touch today!

Trusted, high-quality, annotated reports

The following are examples of when different services may be considered, however clinicians are advised to use their own clinical judgment when selecting a service.



Standard

Designed for non-urgent cases or reviews. You will receive the report before the next appointment.

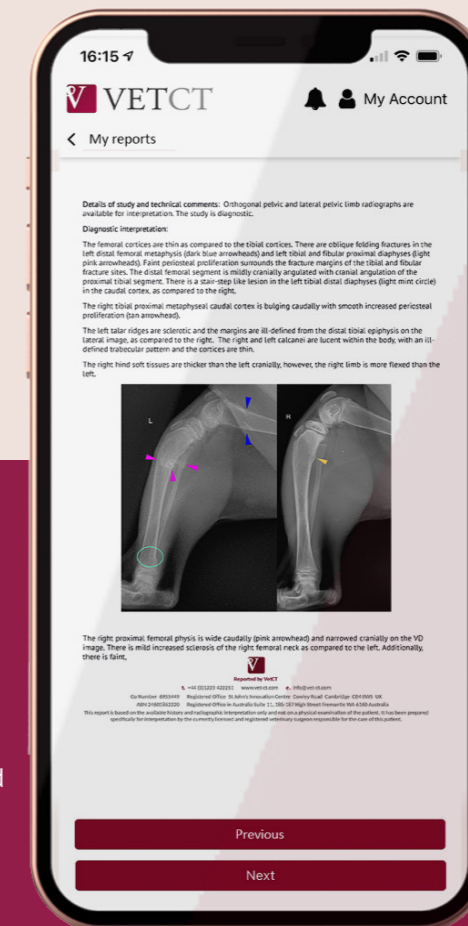
- Chronic gastrointestinal disease
- Chronic lameness
- Juvenile orthopaedic screening
- Working dog screening
- General health evaluation



Enhanced

Aimed at cases which need a slightly faster response, for example:

- Chronic dysuria/stranguria
- Metastasis screen
- Recent onset lameness
- Metabolic disease assessment (i.e. Cushing's, diabetes, etc.)



Priority

Aimed at hospitalised, sick patients. Select this service type when you need expedited answers.

- Recent onset vomiting and/or diarrhoea
- Recent onset of coughing
- Stable trauma
- Metastasis screen
- Recent onset lameness
- Fracture evaluation



Urgent

Get rapid answers for extremely sick, hospitalised patients where time is critical.

- Acute respiratory distress
- Heart failure
- Unstable trauma
- Highly probable GI obstruction
- Urinary obstruction
- GDV

Out of hours

- **Priority:** aimed at hospitalised, sick patients. Select this service type when you need expedited answers between 7pm and 7am Monday to Friday and during the weekend from 7pm Friday to 7am Monday.
- **Urgent:** get rapid answers for extremely sick hospitalised patients needing a time critical report between 7pm and 7am Monday to Friday and during the weekend from 7pm Friday to 7am Monday.



We have used VetCT's teleradiology service for radiographs for the last couple of years. As a general practitioner to have a specialist report with a high level of detail and annotation in such a short time is excellent and this has improved not only our own radiology knowledge but is a useful addition to the discussion with our clients.

Keith Moore, Vet
Hillside Veterinary Centre, UK

99%
of VetCT reports
are delivered on
time!



For more information contact your dedicated Account Manager at sales@vet-ct.com